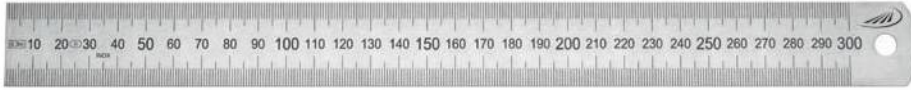




## 0460 Flexible steel rules



0460 204



0460 222



0460 242

### Model

- Stainless spring band steel
- EC grade II
- Rules with special graduations or other scales are available upon request

Model	Length mm	Cross-section mm	Order no.
<b>Scales: mm top and bottom</b>			
▶	150	13 x 0.5	0460 201
▶	200	13 x 0.5	0460 202
▶	300	15 x 0.5	0460 204
▶	500	20 x 0.5	0460 205
▶	1000	20 x 0.5	0460 206
▶	300	30 x 1	0460 207
▶	500	30 x 1	0460 208
▶	1000	30 x 1	0460 209
▶	1500	30 x 1	0460 210
▶	2000	30 x 1	0460 211
▶	3000	30 x 1	0460 212
▪	3000	30 x 2	0460 213
<b>Scales: 1/2 mm top, mm bottom</b>			
▶	150	13 x 0.5	0460 221
▶	200	13 x 0.5	0460 222
▶	250	15 x 0.5	0460 223
▶	300	15 x 0.5	0460 224
▶	500	20 x 0.5	0460 225
▶	1000	20 x 0.5	0460 226
▶	300	30 x 1	0460 227
▶	500	30 x 1	0460 228
▶	1000	30 x 1	0460 229
▶	1500	30 x 1	0460 230
▶	2000	30 x 1	0460 231
▶	3000	30 x 1	0460 232
▪	3000	30 x 2	0460 233
<b>Scales: 1/16", 1/32", 1/64" top; 1/2 mm, 1/1 mm bottom</b>			
▶	150	13 x 0.5	0460 241
▶	200	13 x 0.5	0460 242
▶	250	15 x 0.5	0460 243
▶	300	15 x 0.5	0460 244
▶	500	20 x 0.5	0460 245
▶	1000	20 x 0.5	0460 246
▶	300	30 x 1	0460 247
▶	500	30 x 1	0460 248
▶	1000	30 x 1	0460 249
▶	1500	30 x 1	0460 250
▶	2000	30 x 1	0460 251
▶	3000	30 x 1	0460 252
▪	3000	30 x 2	0460 253



## 0460 Flexible steel rules, satin chrome



0460 502



0460 522

Model			Length mm	Cross-section mm	Order no.
<b>Scales: mm top and bottom</b>					
			150	13 x 0.5	0460 501
			200	13 x 0.5	0460 502
			300	15 x 0.5	0460 504
			500	20 x 0.5	0460 505
			1000	20 x 0.5	0460 506
			300	30 x 1	0460 507
			500	30 x 1	0460 508
			1000	30 x 1	0460 509
		▪	1500	35 x 1.5	0460 510
		▪	2000	35 x 1.5	0460 511
		▪	3000	35 x 1.3	0460 512
<b>Scales: 1/2 mm top, mm bottom</b>					
			150	13 x 0.5	0460 521
			200	13 x 0.5	0460 522
			300	15 x 0.5	0460 524
			500	20 x 0.5	0460 525
			1000	20 x 0.5	0460 526
			300	30 x 1	0460 527
			500	30 x 1	0460 528
			1000	30 x 1	0460 529

### Model

- Stainless spring band steel
- Scales satin chrome finished
- EC grade II

## 0453 Aluminium straight edges, anodized



0453 422

Model			Length mm	Cross-section mm	Order no.
			300	50 x 5	0453 422
			600	50 x 5	0453 430
			1000	50 x 5	0453 434

### Model

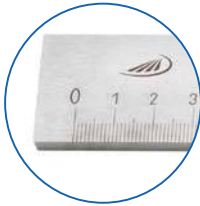
- Bevelled edge
- Non-glare mm graduation
- Factory standard



## 0451 Graduated straight rules acc. to DIN 866, type A



DIN  
866-A





### Model

- Both-sided 10 mm protective ends
- mm graduated scale

### Delivery

- Cardboard box
- From 2000 mm in transportation box

		Length mm	Cross-section mm	Order no.
<b>Special steel</b>				
		500	30 x 6	0451 101
		1000	40 x 8	0451 102
	▪	1500	40 x 8	0451 103
	▪	2000	50 x 10	0451 104
	▪	3000	50 x 10	0451 105
	▪	4000	60 x 12	0451 106
<b>Stainless steel</b>				
		500	30 x 6	0451 201
		1000	40 x 8	0451 202
	▪	1500	40 x 8	0451 203
	▪	2000	50 x 10	0451 204
	▪	3000	50 x 10	0451 205
	▪	4000	60 x 12	0451 206

## 0452 Graduated straight rules acc. to DIN 866, type B



DIN  
866-B





### Model

- Graduated scale begins directly on the end of rule, the other end has a 10 mm protective end
- mm graduated scale

### Delivery

- Cardboard box
- From 2000 mm in transportation box

		Length mm	Cross-section mm	Order no.
<b>Special steel</b>				
		500	25 x 5	0452 101
		1000	30 x 6	0452 103
	▪	1500	30 x 6	0452 104
	▪	2000	40 x 8	0452 105
	▪	2500	40 x 8	0452 106
	▪	3000	40 x 8	0452 107
	▪	4000	50 x 10	0452 108
	▪	5000	60 x 12	0452 109
<b>Stainless steel</b>				
		500	25 x 5	0452 201
		1000	30 x 6	0452 203
	▪	1500	30 x 6	0452 204
	▪	2000	40 x 8	0452 205
	▪	2500	40 x 8	0452 206
	▪	3000	40 x 8	0452 207
	▪	4000	50 x 10	0452 208
	▪	5000	60 x 12	0452 209