



## 0454 Straight edges, with bevelled edge



### Model

- Special steel
- Satin chrome finished
- Factory standard

### Delivery

- Cardboard box
- From 2000 mm in transportation box

	⌘	⌘	Length mm	Cross-section mm	Order no.
			400	40 x 5	0454 424
			500	40 x 5	0454 428
		▪	1000	40 x 5	0454 434
		▪	1500	40 x 5	0454 438
		▪	2000	40 x 5	0454 440
		▪	3000	50 x 8	0454 444

## 0455 Straight edges with bevelled edge, mm graduation



### Model

- Special steel
- Satin chrome finished
- Factory standard
- Graduated scale begins directly on the end of rule, the other end has a 10 mm protective end

### Delivery

- Cardboard box
- From 2000 mm in transportation box

	⌘	⌘	Length mm	Cross-section mm	Order no.
			400	40 x 5	0455 424
			500	40 x 5	0455 428
		▪	1000	40 x 5	0455 434
		▪	1500	40 x 5	0455 438
		▪	2000	40 x 5	0455 440
		▪	3000	50 x 8	0455 444





## 0464 Steel rules made of special steel, accuracy grade 0



DIN 874

rectangular cross section



I shaped cross section, 2 hand slots

### Model

- Special steel
- DIN 874 Sheet 1

### Delivery

- Cardboard box
- From 2000 mm in transportation box

		Length mm	Cross-section mm	Order no.
<b>Special steel, rectangular cross section</b>				
		500	50 x 10	0464 101
		750	50 x 10	0464 102
		1000	60 x 12	0464 103
	▪	1500	70 x 15	0464 104
<b>Special steel, I shaped cross section, 2 hand slots</b>				
	▪	2000	80 x 15	0464 105
	▪	2500	100 x 16	0464 106
	▪	3000	120 x 18	0464 107
	▪	4000	140 x 20	0464 108
	▪	5000	140 x 20	0464 109

## 0465 Steel rules made of special steel, accuracy grade 1



		Length mm	Cross-section mm	Order no.
<b>Special steel, rectangular cross section</b>				
		500	40 x 8	0465 101
		750	50 x 10	0465 102
		1000	50 x 10	0465 103
	▪	1500	60 x 12	0465 104
<b>Special steel, I shaped cross section, 2 hand slots</b>				
	▪	2000	70 x 15	0465 105
	▪	2500	80 x 15	0465 106
	▪	3000	100 x 16	0465 107
	▪	4000	120 x 18	0465 108
	▪	5000	140 x 20	0465 109

## 0466 Steel rules made of special steel, accuracy grade 2



		Length mm	Cross-section mm	Order no.
<b>Special steel, rectangular cross section</b>				
		500	30 x 6	0466 101
		750	40 x 8	0466 102
		1000	40 x 8	0466 103
	▪	1500	50 x 10	0466 104
	▪	2000	60 x 12	0466 105
	▪	2500	70 x 15	0466 106
	▪	3000	80 x 15	0466 107
<b>Special steel, I shaped cross section, 2 hand slots</b>				
	▪	4000	100 x 16	0466 108
	▪	5000	120 x 18	0466 109

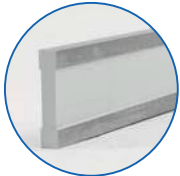


## 0464 Steel rules made of stainless steel, accuracy grade 0



DIN  
874

rectangular cross section



I shaped cross section, 2 hand slots

### Model

- DIN 874 Sheet 1
- Stainless steel

### Delivery

- Cardboard box
- From 2000 mm in transportation box

☒	☒	Length mm	Cross-section mm	Order no.
<b>Stainless steel, rectangular cross section</b>				
		500	50 x 10	0464 201
		750	50 x 10	0464 202
		1000	60 x 12	0464 203
	▪	1500	70 x 15	0464 204
<b>Stainless steel, I shaped cross section, 2 hand slots</b>				
	▪	2000	80 x 15	0464 205
	▪	2500	100 x 16	0464 206
	▪	3000	120 x 18	0464 207
	▪	4000	140 x 20	0464 208
	▪	5000	140 x 20	0464 209

## 0465 Steel rules made of stainless steel, accuracy grade 1



☒	☒	Length mm	Cross-section mm	Order no.
<b>Stainless steel, rectangular cross section</b>				
		500	40 x 8	0465 201
		750	50 x 10	0465 202
		1000	50 x 10	0465 203
	▪	1500	60 x 12	0465 204
<b>Stainless steel, I shaped cross section, 2 hand slots</b>				
	▪	2000	70 x 15	0465 205
	▪	2500	80 x 15	0465 206
	▪	3000	100 x 16	0465 207
	▪	4000	120 x 18	0465 208
	▪	5000	140 x 20	0465 209

## 0466 Steel rules made of stainless steel, accuracy grade 2



☒	☒	Length mm	Cross-section mm	Order no.
<b>Stainless steel, rectangular cross section</b>				
		500	30 x 6	0466 201
		750	40 x 8	0466 202
		1000	40 x 8	0466 203
	▪	1500	50 x 10	0466 204
	▪	2000	60 x 12	0466 205
	▪	2500	70 x 15	0466 206
	▪	3000	80 x 15	0466 207
<b>Stainless steel, I shaped cross section, 2 hand slots</b>				
	▪	4000	100 x 16	0466 208
	▪	5000	120 x 18	0466 209

