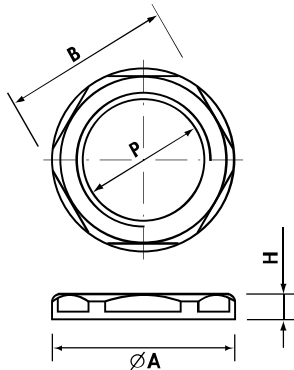


1143
1142
1141



Material: POLYAMIDE PA6 or 6.6
self-extinguishing class V2 (UL 94)
Temperature range:
-20°C to +90°C (continuous)
Colour: RAL 7035 light grey,
RAL 9005 black,
RAL 7001 dark grey



LOCKNUTS WITH COLLAR

Polyamide PA6 or PA6.6

Metric thread M 1.5 pitch CEI EN 60423

| Type Light Grey | P | Ø A (mm) | B Spanner (mm) | H (mm) | Quantity Box/Bag |
|-----------------------|---------|-------------|----------------------|-----------|---------------------|
| 1143M12 | M12x1,5 | 18,5 | 17 | 5 | 1.000/100 |
| 1143M16 | M16x1,5 | 24,0 | 22 | 5 | 600/100 |
| 1143M20 | M20x1,5 | 29,0 | 27 | 6 | 400/100 |
| 1143M25 | M25x1,5 | 35,5 | 32 | 6 | 100 |
| 1143M32 | M32x1,5 | 45,0 | 41 | 7 | 50 |
| 1143M40 | M40x1,5 | 55,0 | 50 | 7 | 30 |
| 1143M50 | M50x1,5 | 65,0 | 60 | 8 | 30 |
| 1143M63 | M63x1,5 | 82,0 | 75 | 8 | 15 |

Add to Ref: N for Black, G for Dark Grey

Pg thread DIN 40 430 - Dimensions DIN 46 320

| Type Light Grey | P | Ø A (mm) | B Spanner (mm) | H (mm) | Quantity Box/Bag |
|-----------------------|--------|-------------|----------------------|-----------|---------------------|
| 1142007 | Pg 7 | 21 | 19 | 5 | 100 |
| 1142009 | Pg 9 | 24 | 22 | 5 | 700/100 |
| 1142011 | Pg11 | 26 | 24 | 5 | 500/100 |
| 1142013 | Pg13,5 | 29 | 27 | 6 | 400/100 |
| 1142016 | Pg16 | 33 | 30 | 6 | 100 |
| 1142021 | Pg21 | 39 | 36 | 7 | 200/50 |
| 1142029 | Pg29 | 50 | 46 | 7 | 50 |
| 1142036 | Pg36 | 66 | 60 | 8 | 30 |
| 1142042 | Pg42 | 73 | 65 | 8 | 25 |
| 1142048 | Pg48 | 78 | 70 | 8 | 20 |

Add to Ref: N for Black, G for Dark Grey

BSP thread ISO 228/1

| Type Light Grey | P | Ø A (mm) | B Spanner (mm) | H (mm) | Quantity Box/Bag |
|-----------------------|--------|-------------|----------------------|-----------|---------------------|
| 1141012 | G1/2" | 29 | 27 | 6 | 400/100 |
| 1141112 | G1"1/2 | 66 | 60 | 8 | 30 |
| 1141200 | G2" | 78 | 70 | 8 | 20 |

Add to Ref: N for Black