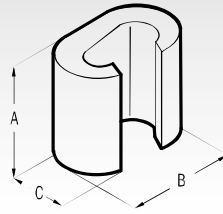


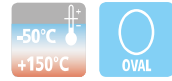
SLEEVE CONNECTORS

for Copper conductors



tin plated version

Conductor Size sqmm		Type	Dimensions mm			Quantity Box/Bag	Mechanical Tools	Hydraulic Tools	
Run	Tap		A	B	C				
6÷2,5	6÷1,5	C6-C6ST*	9,0	9,8	6,4	1.000/100	HP4-C10	B450ND-BV	B500ND
10	10÷1,5	C10-C10ST*	12,0	12,6	8,4	500/100			
16	16÷1,5	C16-C16ST	17,0	19,4	12,0	500/100			
25÷16	10÷1,5	C25-C10ST	17,0	19,8	13,0	400/50			
25	25÷16	C25-C25ST	17,0	21,4	13,0	300/50			
40÷35	16÷1,5	C35-C16ST	21,0	24,6	15,4	200/25			
40÷35	40÷25	C35-C35ST	21,0	26,6	15,6	200/25			
50	25÷10								
70÷63	25÷1,5	C70-C25NST	21,0	26,4	17,5	200/25			
50	25÷4	C50-C25ST	25,0	32,9	21,0	100/25			
50	50÷35	C50-C50ST	26,0	33,0	21,0	100/25			
70÷50	40÷4	C70-C35ST	28,0	33,0	21,0	100/25			
70÷50	70÷35	C70-C70ST	28,0	34,0	21,0	100/25			
100÷95	40÷4	C95-C35ST	29,0	40,6	26,0	50/25			
100÷95	70÷40	C95-C70ST	29,0	41,0	26,0	50/25			
100÷95	100÷63	C95-C95ST	29,0	41,0	26,0	50/25			
125÷110	125÷25	C120-C120ST	30,0	45,0	28,0	50/25			
160÷150	125÷25	C150-C120ST	31,0	45,0	28,0	50/25			
125	125								
150	150÷63	C150-C150ST	30,0	45,0	28,0	50/25			
125	125								
185	100÷16	C185-C95ST	31,0	45,0	28,0	50/25			
185÷120	185÷120	C185-C185ST	22,6	68,0	34,0	30/15			
240÷150	120÷95	C240-C120ST	22,6	68,0	34,0	30/15			



"C" connectors are manufactured from high purity Copper profiles and are suitable for a variety of uses either to create an earthing network or tapping off from overhead distribution lines.

Each connector is marked as follows:

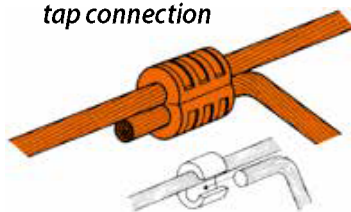
- Cembre trade mark
- Reference number
- Conductor size-Run
- Conductor size-Tap
- Number of crimps
- Die reference.

Details of the appropriate crimping tools and dies are shown on page 234.

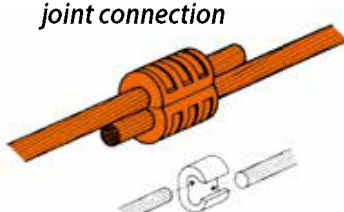
bright surface version

Conductor Size sqmm		Type	Dimensions mm			Quantity Box/Bag	Mechanical Tools	Hydraulic Tools	
Run	Tap		A	B	C				
6÷2,5	6÷1,5	C6-C6*	9,0	9,8	6,4	1.000/100	HP4-C10	B450ND-BV	B500ND
10	10÷1,5	C10-C10*	12,0	12,6	8,4	500/100			
16	16÷1,5	C16-C16	17,0	19,4	12,0	500/100			
25÷16	10÷1,5	C25-C10	17,0	19,8	13,0	400/50			
25	25÷16	C25-C25	17,0	21,4	13,0	300/50			
40÷35	16÷1,5	C35-C16	21,0	24,6	15,4	200/25			
40÷35	40÷25	C35-C35	21,0	26,6	15,6	200/25			
50	25÷10								
70÷63	25÷1,5	C70-C25N	21,0	26,4	17,5	200/25			
50	25÷4	C50-C25	25,0	32,9	21,0	100/25			
50	50÷35	C50-C50	26,0	33,0	21,0	100/25			
70÷50	40÷4	C70-C35	28,0	33,0	21,0	100/25			
70÷50	70÷35	C70-C70	28,0	34,0	21,0	100/25			
100÷95	40÷4	C95-C35	29,0	40,6	26,0	50/25			
100÷95	70÷40	C95-C70	29,0	41,0	26,0	50/25			
100÷95	100÷63	C95-C95	29,0	41,0	26,0	50/25			
125÷110	125÷25	C120-C120	30,0	45,0	28,0	50/25			
160÷150	125÷25	C150-C120	31,0	45,0	28,0	50/25			
125	125								
150	150÷63	C150-C150	30,0	45,0	28,0	50/25			
125	125								
185	100÷16	C185-C95	31,0	45,0	28,0	50/25			
185÷120	185÷120	C185-C185	22,6	68,0	34,0	30/15			
240÷150	120÷95	C240-C120	22,6	68,0	34,0	30/15			

Example of tap connection



Example of joint connection



Example of joining two running conductors

Sezione Conduttore mm²	Type
25-25	C35-C16
35-35	C35-C35
50-50	C70-C70
63-63	C95-C70
70-70	
95-95	C150-C120
120-120	
125-125	C150-C150
120-120	
125-125	C185-C95

